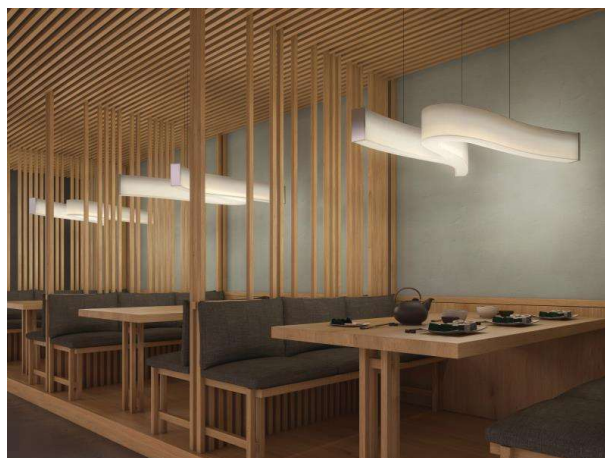


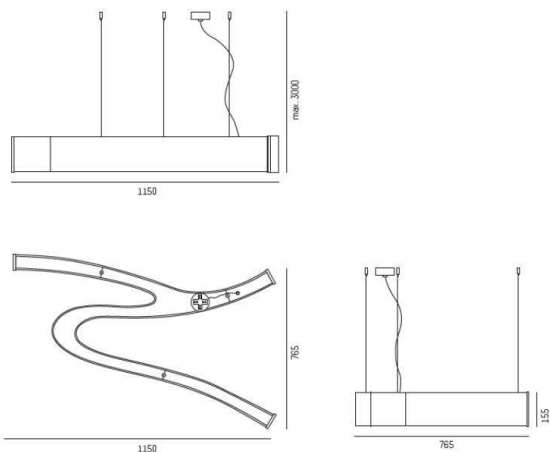
LASH

660-10195ddd

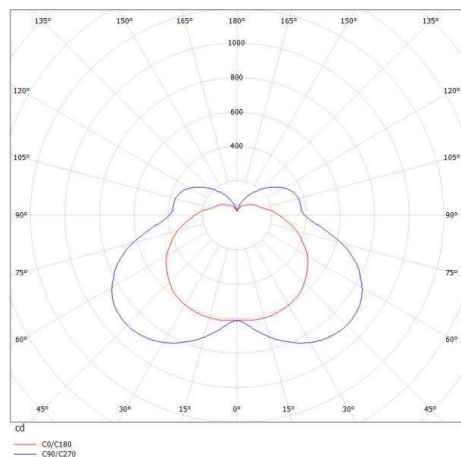
LASH PD SUSPENSION made of metal, white chrome, satined PMMA opal diffuser satined white, light output direct, with converter, dimmability: DALI, cable transparent, adapter/ceiling base white, pendant length 3000mm, IP20



DRAWING



LIGHT DISTRIBUTION CURVE



TECHNICAL DETAILS

System perform. [W]	48
Bulb type	LED
Luminous flux [lm]	5100
Colour temp. [K]	3000K
CRI	>80
Optics	PMMA opal diffuser
Designer	Serge Cornelissen
Converter	with converter
Light output	direct
Voltage [V]	220-240V 50/60Hz
Material	metal
Length [mm]	1150
Width [mm]	765
Height [mm]	155
Pendant length [mm]	3000
IP protection class	IP20
Voltage class	protection cl. I
Net weight [kg]	8,71
Color lamp	white chrome
Glass color	satined white
Color adapter/ceiling base	white
Electric wire	transparent
EAN-Number	9008905517006
Lifetime [h]	L80 B10 50 000
Energy efficiency cl.	D



The values are rated values. Power and luminous flux are initially subject to a tolerance of +/- 10%. Colour temperature tolerance: +/- 150 K. The values apply to an ambient temperature of 25°C unless otherwise specified.